

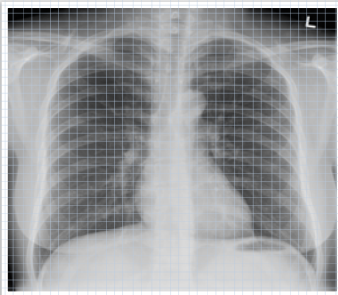


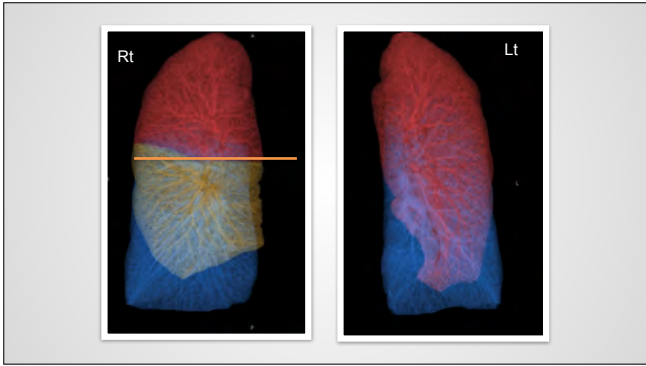
Localization of disease in the thorax

Grid method—establishing the grid lines

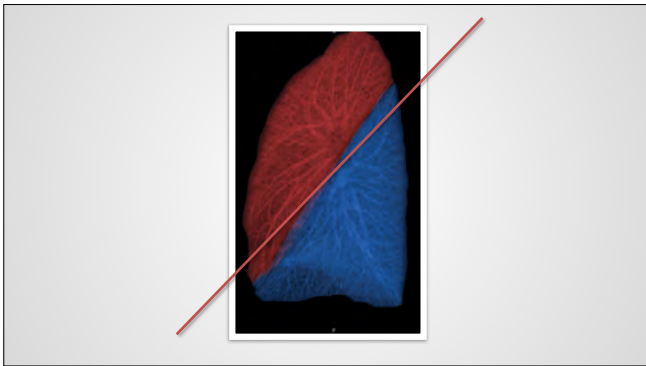
What will I gain from this video?

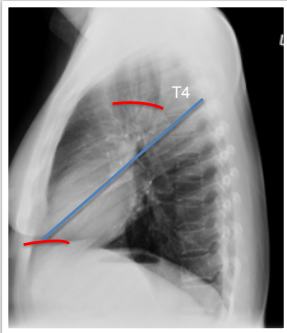
After watching this video, you will know where to position the grid lines that are needed for localization using the grid method.

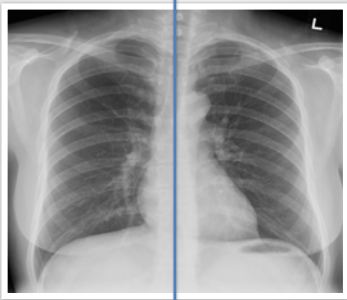


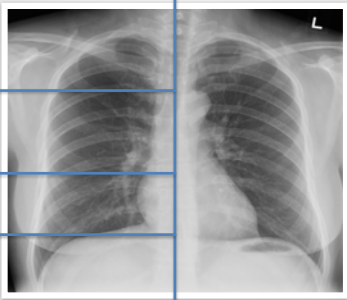


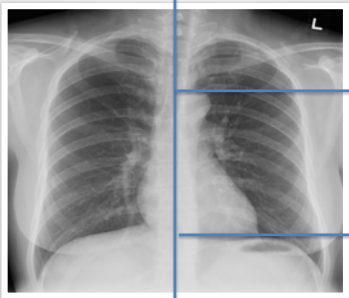
















Use grid lines to localize to lung lobes.

Upper grid line at level of aortic arch.

Inferior grid line at level of dome of diaphragms.

Lateral grid line along course of oblique fissures.

Abnormality above the upper horizontal grid line lies in the upper lobe.

Abnormality below the lower horizontal grid line lies in the lower lobe.

